

SOLUTIONS



Security

Stealth Belts help support the weight of the ostomy appliance as it fills, and they apply a gentle, evenly distributed pressure to the adhesive of the appliance.

Users have reported that Stealth Belts:

- Help prevent leaks
- Reduce skin irritation from adhesive tugging on the skin
- Increase appliance wear time
- Minimize uncomfortable pulling as the pouch fills

Comfort

Stealth Belts are made from a comfortable, lightweight, and quick-drying fabric that is able to be worn for 24-hour support.

Their versatile design makes them great for any activity, including:

- Household chores
- Errands
- Exercise
- Sleeping
- Intimacy
- Swimming & more



Discretion

Stealth Belts feature a zippered pouch compartment that contains and conceals the ostomy appliance with a stylish and low-profile design.

Stealth Belt's unique features allow users to:

- Have easy access when it is time to empty
- Keep the pouch hidden from sight
- Wear tight fitting clothing, belts, and tucked-in dress shirts
- Regain confidence

CUSTOM CAPABILITIES

Stealth Belt is dedicated to making ostomy support belts that work to fit unique needs. We offer many customizations, including:

- Custom Colors, Prints, & Fabrics
 - Hernia Support Options
 - Double Ostomy Belts
 - High Performance Styles
- Extra/ Unique Zipper Placement
 - XL & XS Sizing
 - & More

OUR TEAM

At Stealth Belt, we understand the unique challenges that come with living with an ostomy. It is our mission to provide ostomy support belts and service that our customers can count on.

Our caring and compassionate team believes in the power of our products to help you "Go Anywhere. Do Anything."

For additional help or questions, our customer care team is available Monday through Friday, 9 A.M. - 6 P.M. EST, via phone or our online chat feature.

1-800-237-4491 | WWW.STEALTHBELT.COM



STEALTH BELT®

GO ANYWHERE DO ANYTHING

WHAT IS A STEALTH BELT?

A Stealth Belt is a custom ostomy support belt that is specially designed to hold the ostomy appliance securely and discreetly in place against the body.

PRODUCTS



The Stealth Belt Pro is lightweight and breathable, designed for a variety of uses including:

- Daily Wear
- Concealment
- Exercise
- Light Swimming

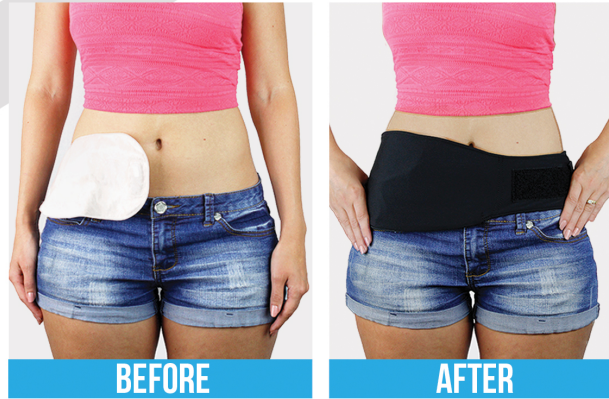
The Vertical Stealth Belt is designed to hold the pouch vertically, making it great for a variety of uses including:

- Daily Wear
- Concealment
- Exercise
- Light Swimming



The Slip-On Stealth Belt was created for maximum comfort and light support, making it great for:

- Casual Wear
- Sleeping
- Intimacy
- Leisure



Benefits of Horizontal Wear:

- Less material makes for a more streamlined feel
- No need to tuck the appliance under belts or waistbands
- Seat belts in cars and airplanes are more comfortable

HORIZONTAL vs. VERTICAL

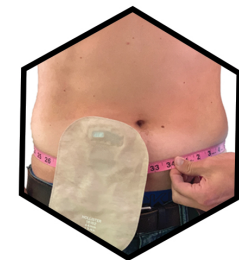
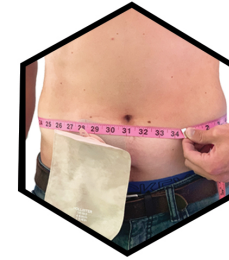


Vertical Style is Often Preferred For:

- Wearing the appliance in a vertical position
- Patients with urostomies or watery-output
- Patients with high-output appliances

HOW TO MEASURE

1. Measure the body size.



- Measure around the body above and below the stoma. Average the two measurements.

2. Indicate which side of the body the stoma is on.

3. Measure the flange diameter by following the steps below.

FOR A TWO PIECE APPLIANCE:



- Separate the two pieces
- Measure the raised plastic ring from left to right
- Record measurement

FOR A ONE PIECE APPLIANCE:



- Fold flaps in towards the center
- Measure from left to right where the pouch meets the wafer
- Record measurement

HOW TO ORDER

Call 1-800-237-4491
or visit
www.stealthbelt.com